

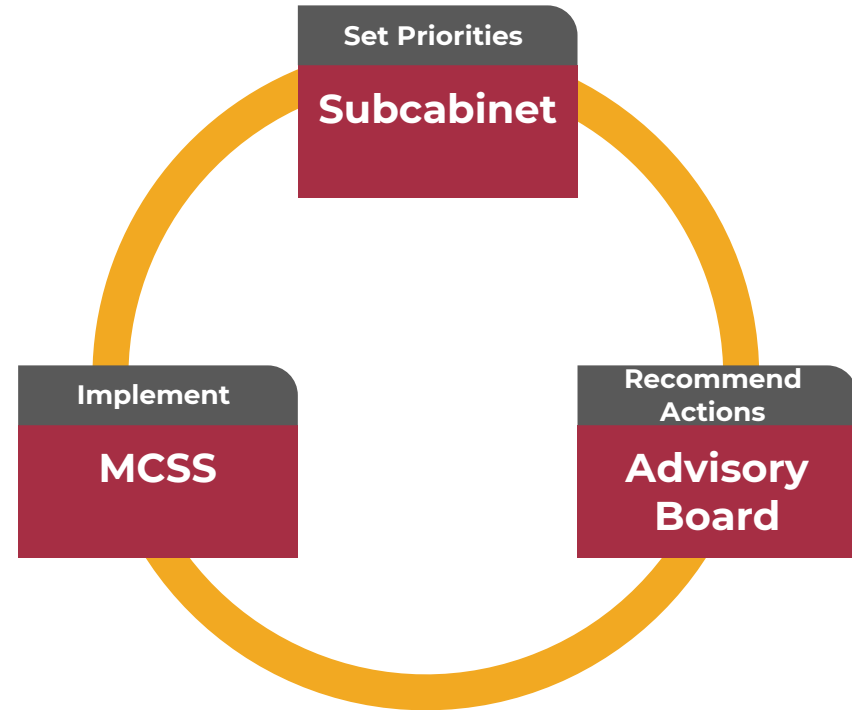
MARYLAND CENTER for SCHOOL SAFETY

School Safety in Maryland

Presentation for the
Maryland State Board of Education
December 5, 2023

The Maryland Center for School Safety

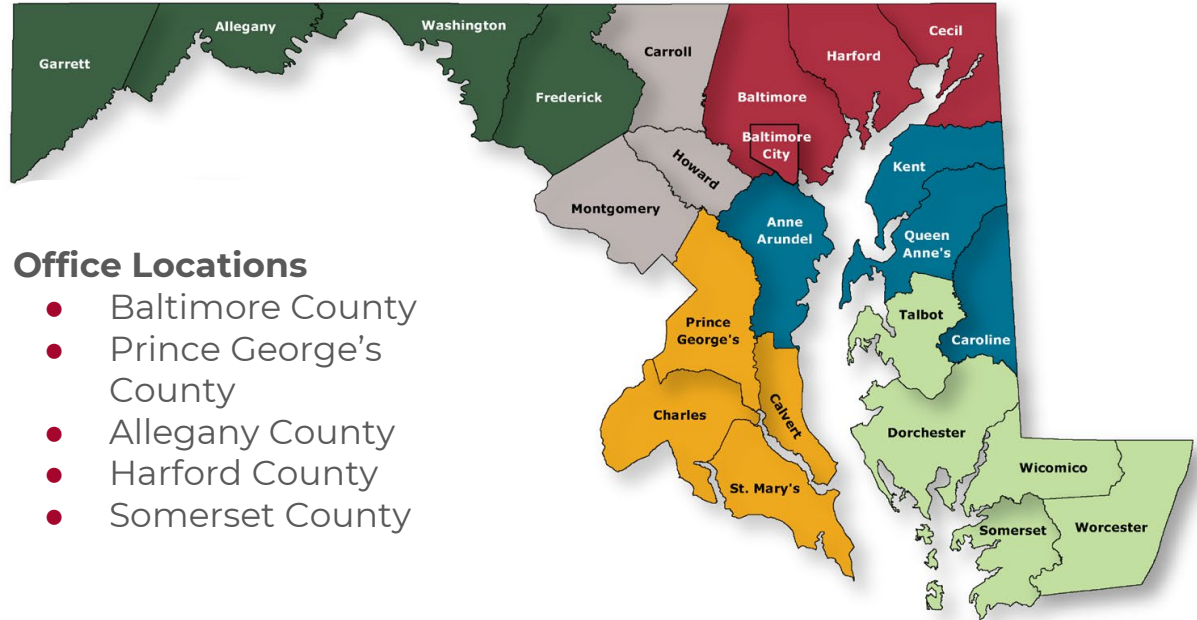
- Independent state agency, established by State Law (Ed. Art. §§ 7-1501 - 1512), **Safe To Learn Act 2018**
- Governing Board, Subcabinet, has broad regulatory authority
- Provide resources and support for public, nonpublic, and private PK-12 schools



The Maryland Center for School Safety

15 Staff

- Policy & Administration
- Communications
- Finance
- Grant Administration
- Data & Technology
- Regional Operations
- Training & Certification
- Prevention & Intervention





Office Locations

- Baltimore County
- Prince George's County
- Allegany County
- Harford County
- Somerset County

MARYLAND CENTER for SCHOOL SAFETY REGIONS

Maryland School Safety Programs & Initiatives

	<h2 style="text-align: center;">Shared Responsibility</h2>	
<ul style="list-style-type: none"> ● Safe Schools Maryland (SSMD) Anonymous Reporting System ● School Resource Officer (SRO) & School Security Employee (SSE) Training Academy ● Behavior Threat Assessment ● Emergency Tabletop Exercises ● Student Voice Programs ● Annual School Safety Conference ● School Safety Grant Administration 	<ul style="list-style-type: none"> ● Emergency Planning ● Emergency Preparedness Drills ● State Coordinated Emergency Response -Integrated Preparedness 	<ul style="list-style-type: none"> ● Safe and Healthy Students (Title IV, Part A, Student Support & Academic Enrichment Grant) ● Mental Health Response Program ● Project AWARE ● Grant to States for Emergency Management (GSEM)

School Safety Program

SRO/SSE Training Academy Program

- Required for all SRO or SSE assigned to Maryland public schools
- Law Enforcement objectives approved by the Maryland Police Certification and Training Commission (MPCTC)
- 70 hours of content delivered using a hybrid instructional model
- Taught by MCSS staff and “Subject Matter Experts”
- Maryland SRO training academy serves as a national model
- Additional Training for SRO Supervisors and School Administrators

COMAR 14.40.04

Emergency Preparedness Planning, Assessing & Preparing

Existing Emergency Planning Guidelines

- Basic elements (contacts, building features, etc.)
- Procedures for different types of situations and events (i.e., hazard specific annexes)
- Communications
- Assessing and training for vulnerabilities (i.e., teaching procedures, drills and exercises)
- Addressing corrective actions (i.e., making improvements)

Future Effort: Support MSDE on updates to the current Emergency Planning Guidelines

NOTE: School Emergency Plans are protected from disclosure under the General Provisions Article § 4-314.1

December 2019

Maryland Emergency Planning Guidelines for Local School Systems and Schools

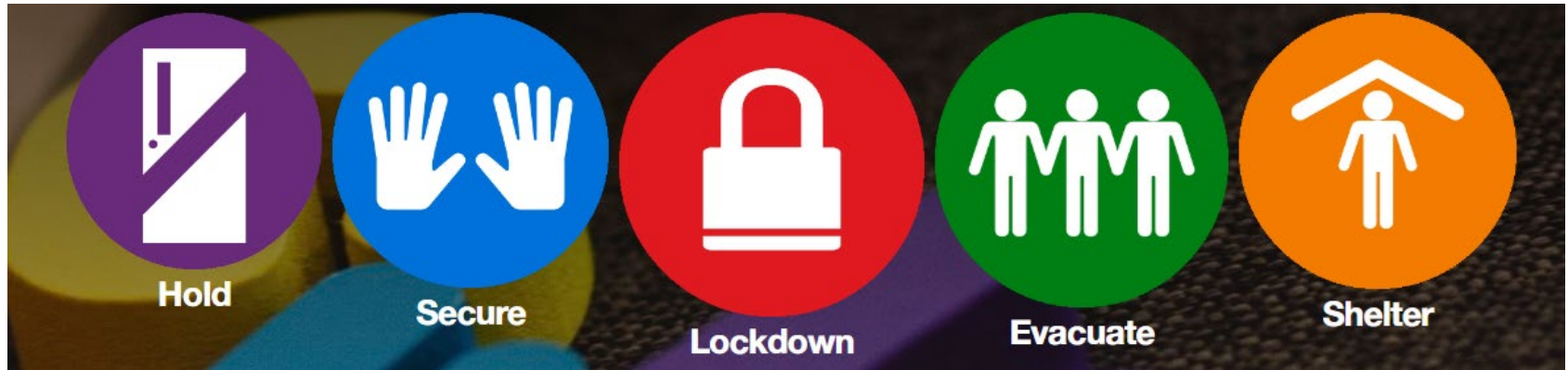


Division of Student Support, Academic
Enrichment, and Educational Policy
Maryland State Department of Education



Emergency Preparedness Standard Response Protocols

- Evidence based protocols
- Common lexicon across agencies and locations
- All hazards approach teaching procedures



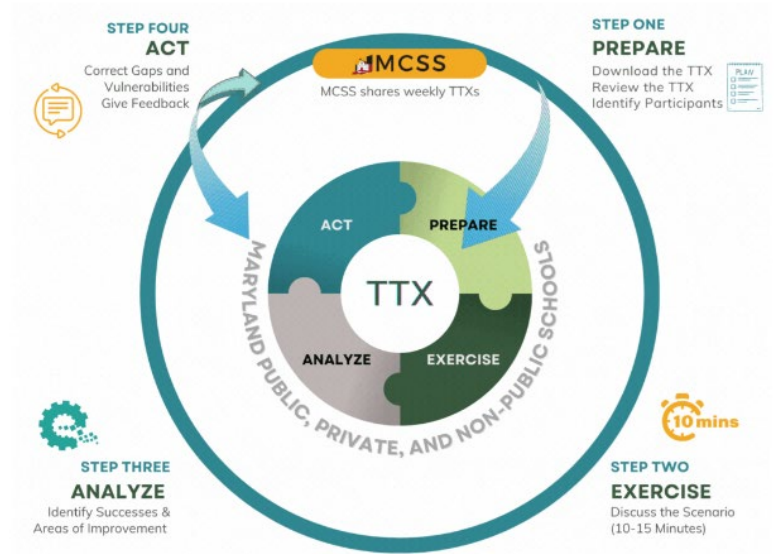
"I Love U Guys" Foundation

School Safety Program

Emergency Tabletop “Are We Ready” Exercises

- Real life scenario based exercises with a facilitator’s guide
- Designed for school preparedness efforts

Future Effort: Discussions with MSDE and State Board Education Policy Committee regarding revisions to requirements related to school safety drills to align with 2023 evidence based protocol lexicon, *COMAR 13A.02.02.04C*.

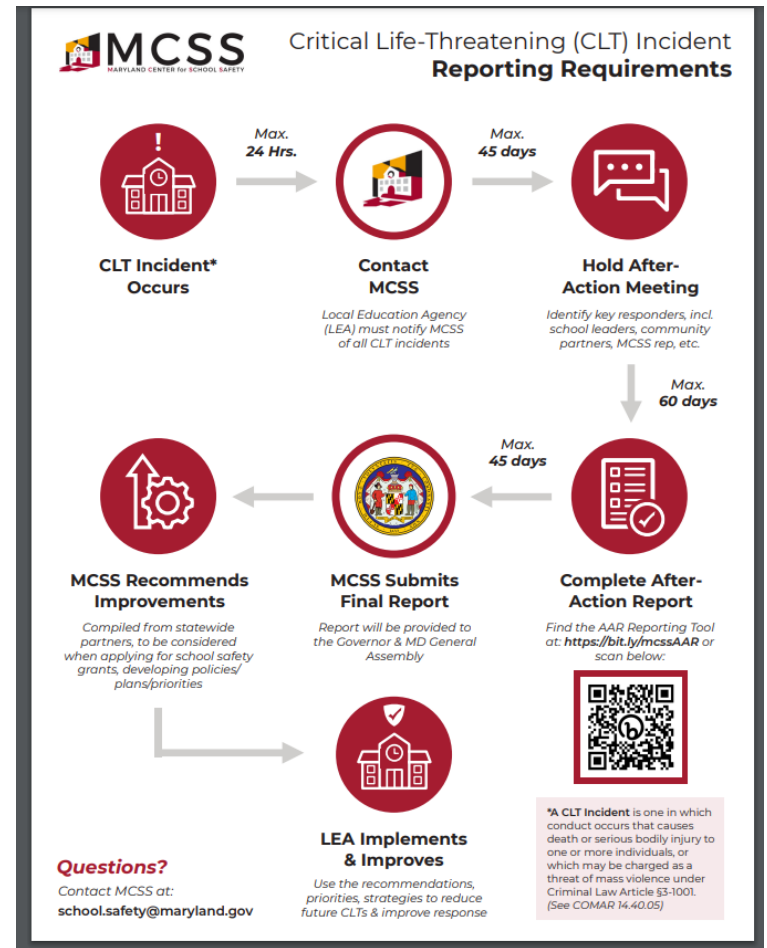


School Safety Program

After Action Reviews Following Critical Life-Threatening Incidents

- LEAs notify MCSS of life-threatening incidents
- LEAs conduct after-action reviews
- LEAs complete and submit after-action reports
- MCSS develops and submits recommendations for improvements to school safety

Ed. Art. §7-1510(g)
COMAR 14.40.05



School Safety Program

Safe Schools Maryland Anonymous Reporting System

Always Anonymous, Always Available

24 hours, 365 days of year

Serving Maryland PK-12 Public & Private Schools

Three ways to report:

- **App:** Safe Schools MD
- **Phone:** 1-833-MD-B-SAFE
- **Web:** SafeSchoolsMD.org

See it. Hear it. **REPORT IT!**

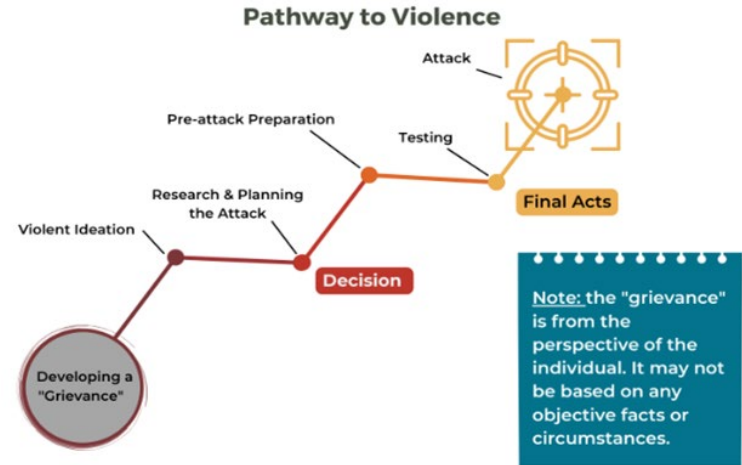


MARYLAND CENTER for SCHOOL SAFETY

School Safety Programs

Behavior Threat Assessment

- 2018 Behavior Threat Assessment Model Policy
- 2023 Behavior Threat Assessment Implementation Guide
- Behavior Threat Assessment Multi-disciplinary Team Exercises
- Workshops & Technical Assistance



Ed. Art. §7-1507

Resources: <https://schoolsafety.maryland.gov/Pages/RES-BTA.aspx>

School Safety Programs

Student Voice

Student representatives on MCSS governing bodies;
School Safety Subcabinet and Advisory Board

Student Advocates for School Safety (SASS)

- Diverse student group developing and promoting school safety events and activities
- Provide student perspective

Local school safety clubs

- Encouraging local schools to provide student voice through participation in a school safety club





School Safety FY24 Grants Administered by MCSS

School Safety Grant Program administered on behalf of the Interagency Commission on School Construction (IAC)	\$10,000,000
Nonpublic School Security Improvement Grant administered on behalf of the Interagency Commission on School Construction (IAC)	\$0
School Resource Officer (SRO) Grant Program	\$10,000,000
School Safety Evaluation Grant	\$3,000,000
Hate Crimes Grant	\$3,000,000
Safe Schools Fund Grant	\$600,000

Maryland School Safety

Required Data Collections and Reports

	Shared Responsibility					
<ul style="list-style-type: none"> ● Use of Force ● SRO/Adequate Law Enforcement Coverage ● Critical Life-Threatening Incident ● Threats, Emergency Responses, and Emergency Plan Performance 	<p style="text-align: center;">Emergency Operation Plans (EOPs)</p> <table border="1" style="width: 100%; border-collapse: collapse;"> <thead> <tr style="background-color: #e0e0e0;"> <th style="width: 50%; text-align: center;">MCSS</th> <th style="width: 50%; text-align: center;">MSDE</th> </tr> </thead> <tbody> <tr> <td style="padding: 5px;">Review, feedback, archive, and provide technical support</td> <td style="padding: 5px;">Emergency Planning Guidelines Certification</td> </tr> </tbody> </table>	MCSS	MSDE	Review, feedback, archive, and provide technical support	Emergency Planning Guidelines Certification	<ul style="list-style-type: none"> ● Student Arrests ● Reportable Offenses ● Gangs & Gang Activity ● Bullying, Harassment & Intimidation ● Student Discipline ● Restraint & Seclusion ● School Climate Survey
MCSS	MSDE					
Review, feedback, archive, and provide technical support	Emergency Planning Guidelines Certification					

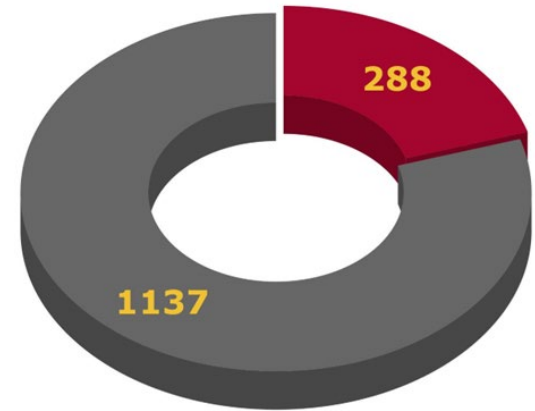
Reports

Adequate Law Enforcement Coverage

All public schools must develop adequate law enforcement coverage plans.

288 public schools have a full-time assigned SRO

Maryland Public Schools with Full-Time Assigned SRO



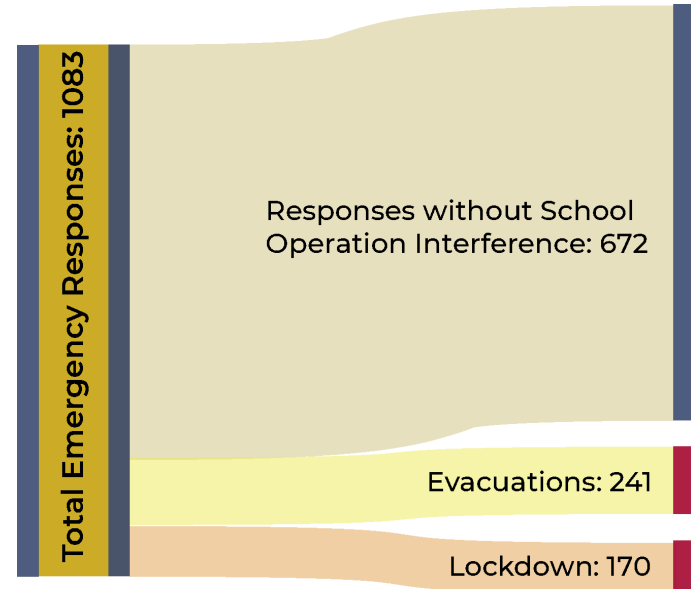
- Schools with Full-Time Assigned SRO (20.2%)
- Schools with Adequate Coverage (79.8%)

Reports

Emergency Plan Performance Summary Report

MCSS collects annually from each LEA in the form of a report on the performance of emergency plans that includes the following information. This information is included within the MCSS Annual Performance Report. MCSS collects the number of:

- 1,721 threats made against any school or school system facility
- 1,083 emergency responses to a school
- 241 emergencies resulting in an evacuation
- 170 emergencies resulting in a lockdown



2022-2023 School Year

Lessons Learned Informing 2024 Priorities

Behavior Threat Assessment

Increasing knowledge and skills of Maryland public schools Behavioral Threat Assessment teams through direct instruction, communications, resource documents, and exercises. Extending knowledge to include **planning for interventions** that decrease the risk a student poses allowing them to maintain healthy connections to the school community.

Safe Schools Maryland Anonymous Reporting System

Expanding awareness and access to Maryland's anonymous school safety tipline, Safe Schools Maryland (SSMD), through communication and outreach. **Empowering bystanders** to come forward with information about behaviors of concerns and providing school officials with the knowledge and skills to appropriately respond to reports.

Lessons Learned Informing 2024 Priorities

Maryland Coordinated Emergency Response

Coordinating emergency response and recovery planning, training, and exercises across State agencies in an effort to support a **rapid and coordinated response** to a school-based incident in all jurisdictions.

Standard Emergency Response Protocols

Through training, communications, and exercises for all Maryland schools, **increase use** of standard response language across agencies and jurisdictions to include the terms; Hold, Secure, Lockdown, Evacuate, and Shelter. Increase school leaders knowledge and skills identifying the **appropriate response protocol** to use given an evolving emergency situation.

MARYLAND CENTER for SCHOOL SAFETY

School Safety: Local Efforts

Howard County Public Schools



One Focus: Every Student Achieving

HCPSS Strategic Call to Action: Learning and Leading with Equity

— 2022 and Beyond —

Michael J. Martirano, Ed.D., Superintendent

***“The Fierce
Urgency
of Now”***



Vision

Every student and staff member embraces diversity and possesses the skills, knowledge and confidence to positively influence the larger community.

Mission

HCPSS ensures academic success and social-emotional well-being for each student in an inclusive and nurturing environment that closes opportunity gaps.

HCPSS Student Safety and Well-Being



Multi-Tiered Systems of Behavioral Health Supports

Threat Management Process

Emergency Preparedness

Suicide Intervention Procedures

Crisis Intervention Teams

Multi-Tiered Systems of Behavioral Health Supports

Tier 1 - Universal Interventions (80-90%)

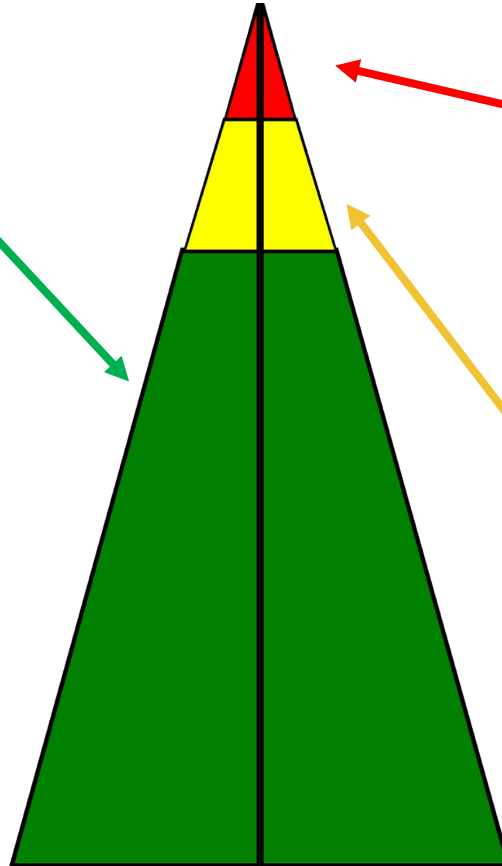
Social Emotional Learning at Elementary and Middle

Suicide Prevention: Information for Educations (Annual Staff Training)

Positive Behavior Intervention and Supports and Restorative Justice

Health Education (K-9) and School Counseling Curricula (K-12)

NOTE: This is a sample, not a complete listing, of tiered supports.



Tier 3 - Individualized Interventions (1-5%)

Individual Counseling (School Psychologist/Counselor/Social Worker)

Functional Behavior Assessment/Behavior Intervention Plan

Tier 2 - Targeted Interventions (5-10%)

In-School Alternative Education Supports

Small Group Interventions such as Check In/Check Out

Student Support Team

Small Group Counseling (School Counselor/Psychologist/Social Worker)

HCPSS Umbrella of Supports

Emergency Preparedness

- Emergency Contact Information
- Emergency Communication System
- Drills for Evacuation, Lockdown, Modified Lockdown, Shelter in Place and Duck, Cover and Hold On
- Tabletop and Onsite Drills with community, including Howard County Office of Emergency Management, Police Department, Health Department and Fire and Rescue Services

Crisis Intervention Teams

- Each school has a Crisis Team
- County-Wide Crisis Team also available, as needed
- Team(s) respond in the event of a student or staff death or other tragedy that impacts the school community
- Annual trainings for both school-based and county-wide teams
- Goal of crisis response is to provide supports and restore equilibrium

HCPSS Umbrella of Supports (Continued)

Suicide Intervention Procedures

- Anytime and everytime a student makes a statement, gesture, etc. of self-harm they are IMMEDIATELY referred to a school counselor, psychologist, or social worker.
- Student interviewed to determine *degree of match* to known risk factors of suicide
- Parent is contacted to discuss safety, risk and preventative factors, share resources and determine next steps to address concern

Threat Management Process*

- All threats of harm to others are reported to school administration
- A screening is completed to determine if a threat is transient
- A full threat assessment identifies risk factors and interventions to support
- A mental health assessment may be required if there are unknowns about whether the student poses a threat

*Based on Dewey Cornell's *Comprehensive School Threat Assessment Guidelines* (2018).