

Computer-Based Assessments

Tools provided via the computer-based delivery system include:

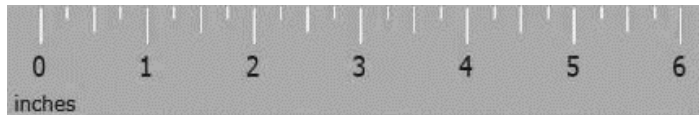
RULERS

A grade/course appropriate ruler will be provided through the computer-based delivery system for the MCAP Mathematics Assessments for grades 3-8 and Algebra I, Geometry and Algebra II.

Grade 3

- Customary ruler in $\frac{1}{4}$ inch increments

Sample ruler:



Grades 4 – 8, Algebra I, Geometry, Algebra II

- Customary ruler in $\frac{1}{8}$ inch increments

Sample ruler:



- Metric ruler in centimeter increments

Sample ruler:



PROTRACTORS

A protractor will be provided through the computer-based delivery system for the MCAP Mathematics Assessments for grades 4-8 and Algebra I, Geometry and Algebra II.

CALCULATORS

A grade/course appropriate calculator will be provided through the computer-based delivery system for the MCAP Mathematics Assessments for grades 3-8 and Algebra I, Geometry and Algebra II on items that allow the use of a calculator.

Grade/Course	Description of the Provided Calculator
3-5	<ul style="list-style-type: none"> • Four-function calculator with square root and percentage functions labeled “Five Function Calculator” • Four-function calculator with square root and percentage functions labeled “Desmos Basic Four Function Calculator”
6-7	<ul style="list-style-type: none"> • Scientific calculator • Desmos version of scientific calculator
8	<ul style="list-style-type: none"> • Scientific calculator • Desmos version of scientific calculator
Algebra I Geometry Algebra II	<ul style="list-style-type: none"> • The TI-84 CE graphing calculator • Desmos version of graphing calculator

Drawing Box

The “Drawing Box” will appear below the box provided for entering responses to constructed response items. Students may use the tools to the left of the “Drawing Box” to create a drawing in the provided box to help explain their answer.

Other Allowable Tools

Tools that are allowable but **not** provided via the computer-based delivery system include:

(Refer to the MCAP Test Administration Manual for further directions related to the use of tools listed below)

- Graph Paper (allowable on all MCAP mathematics assessments)
- Geometry tools (Grade 8 and Geometry assessments only)
 - Tracing paper
 - Reflection tools
 - Straight edge
 - Compass

Paper-Based Assessments

For paper-based assessments, rulers, protractors, and grade-level appropriate calculators must be provided by the school and/or test coordinator. The school and/or test coordinator may also provide the allowable tools listed above.